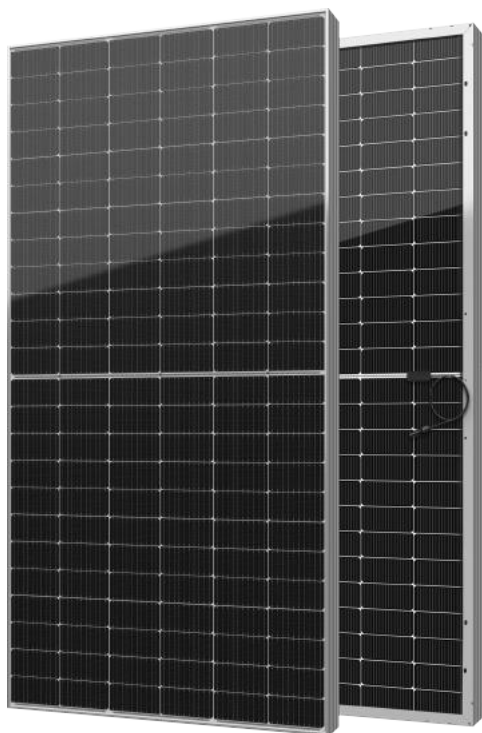




# YUKON Series

Half-Cell Bifacial Module

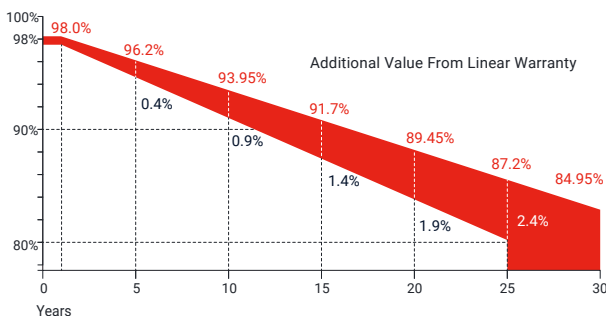
**540-555Wp** | **21.48%**  
Module Power Output | Max Efficiency



## Key Features

- High module conversion efficiency
- Better temperature coefficient
- Super multi busbar technology
- Low attenuation long warranty
- Superior load capacity
- Higher bifaciality
- USA based liability insurance
- Houston, Texas based company

## Warranty



**15** Years Guarantee on product material and workmanship

**30** Years Linear power output warranty

## Product Certification

IEC61215; IEC61730; UL61215; UL61730	
IEC62804	PID
IEC61701	Salt Mist
IEC62716	Ammonia Resistance
IEC60068	Dust and Sand
IEC61215	Hailstone
Fire Type (UL61730): Type 29	
ISO14001:2015; ISO9001:2015; ISO45001:2018	

## About SEG Solar

Founded in 2016, SEG is a leading vertically integrated PV manufacturer headquartered in Houston, Texas, U.S., and is dedicated to delivering reliable and cost-effective solar modules to the utility, commercial and residential markets. By the end of 2023, SEG has shipped over 5 GW of solar modules worldwide. The company is expected to exceed a production capacity of 5.5 GW by the end of 2024.



Download Datasheet

## Electrical Characteristics

Module Type	SEG-540-BMA-BG			SEG-545-BMA-BG			SEG-550-BMA-BG			SEG-555-BMA-BG		
	Front STC	Front NOCT	Back STC	Front STC	Front NOCT	Back STC	Front STC	Front NOCT	Back STC	Front STC	Front NOCT	Back STC
Maximum Power -Pmp(Wp)*	540	406	378	545	409	382	550	414	385	555	418	389
Open Circuit Voltage -Voc(V)	49.50	46.18	49.48	49.60	46.32	49.58	49.70	46.40	49.68	49.80	46.47	49.78
Short Circuit Current -Isc(A)	13.81	11.16	9.74	13.91	11.23	9.80	14.01	11.32	9.87	14.10	11.40	9.94
Maximum Power Voltage -Vmp(V)	41.55	38.39	41.61	41.81	38.41	41.86	42.07	38.58	42.10	42.31	38.75	42.35
Maximum Power Current -Imp(A)	13.00	10.59	9.09	13.04	10.65	9.13	13.08	10.73	9.15	13.12	10.79	9.19
Module Efficiency(%)	20.90			21.10			21.29			21.48		
Power Tolerance(W)							(0, +4.99)					
Maximum System Voltage							1500V DC					
Maximum Series Fuse Rating							30 A					
Bifaciality							70±10%					

STC: Irradiance 1000 W/m<sup>2</sup> module temperature 25°C AM=1.5

NOCT: Irradiance 800W/m<sup>2</sup> ambient temperature 20°C module temperature 45°C wind speed: 1m/s

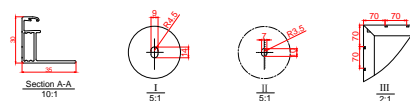
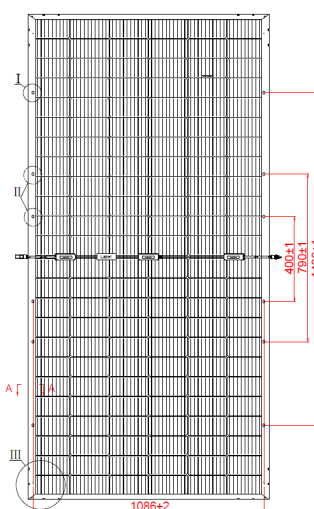
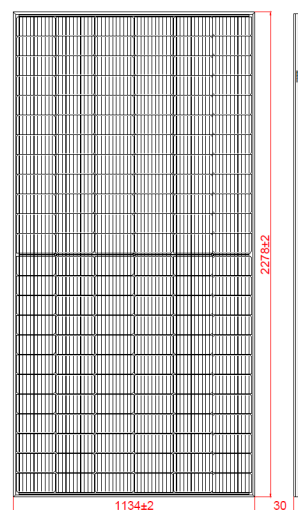
\*Measuring tolerance: ±3%

## Mechanical Specifications

External Dimension	2278 x 1134 x 30 mm
Weight	32.0 kg
Solar Cells	PERC Mono 144 pcs(72 x 2)
Front Glass	2.0 mm AR coating semi-tempered glass
Back Glass	2.0 mm Semi-tempered glass
Frame	Anodized aluminium alloy
Junction Box	IP68 / 3 diodes
Connector Type	PV-C002-xy or MC4
Cable Type	12 AWG PV Wire(UL)
Cable Length	Portrait: 400 mm(+) / 200 mm(-) Landscape: 1200 mm(+) / 1200 mm(-) or customized length
Mechanical Load(Front)	5400 Pa / 113 psf*
Mechanical Load(Rear)	2400 Pa / 50 psf*

\*Refer to SEG installation manual for details

## Technical Drawing



\*Refer to SEG installation manual for details

## Temperature Characteristics

Pmax Temperature Coefficient	-0.35 %/°C
Voc Temperature Coefficient	-0.27 %/°C
Isc Temperature Coefficient	+0.05 %/°C
Operating Temperature	-40~+85 °C
Nominal Operating Cell Temperature (NOCT)	45±2 °C

## Packing Configuration

Container*	20'GP	40'HQ
Pieces per Pallet	36	36
Pallets per Container	4	20
Pieces per Container	144	720

\*Refer to the SEG container technical documentation for 53' box trailer or other trucks loading quantity

## Curves of PV Module

