

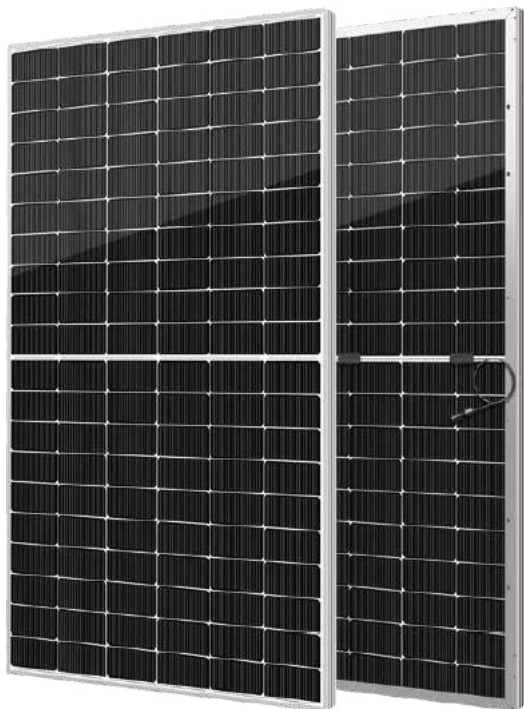


# YUKON N Series

Half-Cell N-Type Bifacial Module

**470-485Wp**  
Module Power Output

**22.40%**  
Max Efficiency



## Key Features



High module conversion efficiency



Better temperature coefficient



Super multi busbar technology



Low attenuation long warranty



Superior load capacity



Higher bifaciality

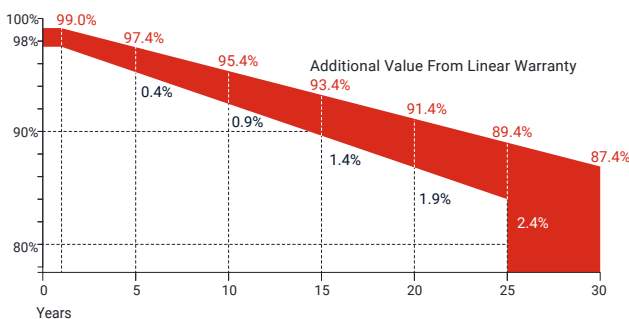


USA based liability insurance



Houston, Texas based company

## Warranty



**15 Years** Guarantee on product material and workmanship

**30 Years** Linear power output warranty

## Product Certification

IEC61215:2016; IEC 61730:2016; UL61215; UL61730

IEC62804 PID

IEC61701 Salt Mist

IEC62716 Ammonia Resistance

IEC60068 Dust and Sand

IEC61215 Hailstone

Fire Type (UL61730): Type 29

ISO14001:2015; ISO9001:2015; ISO45001:2018



## About SEG Solar

Founded in 2016, SEG is a leading vertically integrated PV manufacturer headquartered in Houston, Texas, U.S., and is dedicated to delivering reliable and cost-effective solar modules to the utility, commercial and residential markets. By the end of 2023, SEG has shipped over 5 GW of solar modules worldwide. The company is expected to exceed a production capacity of 5.5 GW by the end of 2024.



Download Datasheet

### Electrical Characteristics

Module Type	SEG-470-BTB-BG			SEG-475-BTB-BG			SEG-480-BTB-BG			SEG-485-BTB-BG		
	Front STC	Front NOCT	Back STC	Front STC	Front NOCT	Back STC	Front STC	Front NOCT	Back STC	Front STC	Front NOCT	Back STC
Maximum Power -Pmp(Wp)*	470	353	376	475	357	380	480	361	384	485	365	388
Open Circuit Voltage -Voc(V)	42.80	40.66	42.78	43.00	40.85	42.98	43.20	41.04	43.18	43.40	41.24	43.38
Short Circuit Current -Isc(A)	13.88	11.10	11.10	13.94	11.15	11.15	14.00	11.20	11.20	14.08	11.27	11.27
Maximum Power Voltage -Vmp(V)	35.60	30.40	35.60	35.80	33.63	35.82	36.00	33.83	36.02	36.20	34.05	36.20
Maximum Power Current -Imp(A)	13.21	10.57	10.57	13.27	10.62	10.62	13.34	10.67	10.67	13.40	10.72	10.72
Module Efficiency(%)	21.71			21.94			22.17			22.40		
Power Tolerance(W)							(0, +4.99)					
Maximum System Voltage							1500V DC					
Maximum Series Fuse Rating							30 A					
Bifaciality							80±10%					

STC: Irradiance 1000 W/m<sup>2</sup> module temperature 25°C AM=1.5

NOCT: Irradiance 800W/m<sup>2</sup> ambient temperature 20°C module temperature 45°C wind speed: 1m/s

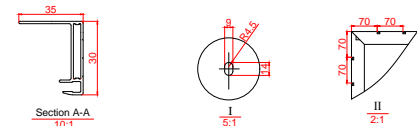
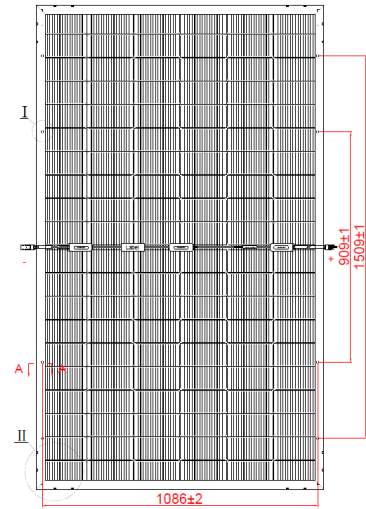
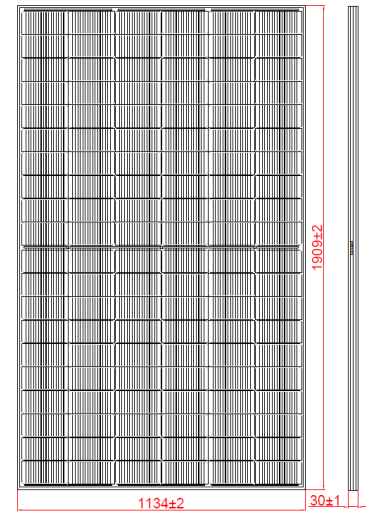
\*Measuring tolerance: ±3%

### Mechanical Specifications

External Dimension	1909 x 1134 x 30 mm
Weight	27.3 kg
Solar Cells	N-Type 182 x 91 mm(120 pcs)
Front Glass	2.0 mm AR coating semi-tempered glass
Back Glass	2.0 mm Semi-tempered glass
Frame	Anodized aluminium alloy
Junction Box	IP68 / 3 diodes
Connector Type	PV-C002-xy or MC4
Cable Type	12 AWG PV Wire(UL)
Cable Length	Portrait: 400 mm(+)/ 200 mm(-) Landscape: 1200 mm(+)/ 1200 mm(-) or customized length
Mechanical Load(Front)	5400 Pa / 113 psf*
Mechanical Load(Rear)	2400 Pa / 50 psf*

\*Refer to SEG installation manual for details

### Technical Drawing



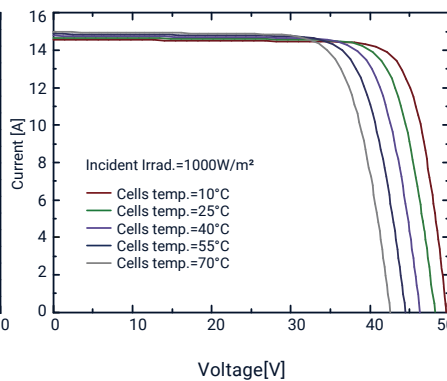
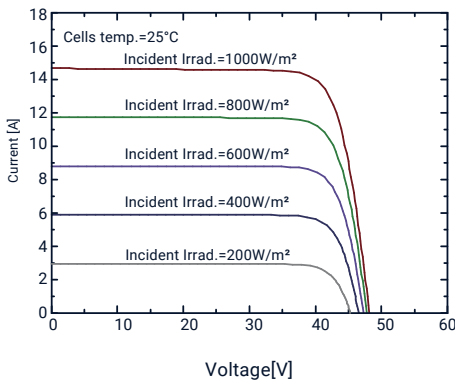
### Temperature Characteristics

Pmax Temperature Coefficient	-0.30 %/°C
Voc Temperature Coefficient	-0.25 %/°C
Isc Temperature Coefficient	+0.046 %/°C
Operating Temperature	-40~+85 °C
Nominal Operating Cell Temperature (NOCT)	45±2 °C

### Packing Configuration

Container	20'GP	40'HQ	40'HQ (For USA)
Pieces per Pallet	36	36	36
Pallets per Container	5	24	18
Pieces per Container	180	864	648

### I-V Curve



\*Refer to SEG installation manual for details